

The Central Shenandoah Valley Region



Facts and Figures 2007

THE CENTRAL SHENANDOAH VALLEY REGION is located in the scenic Shenandoah Valley of west-central Virginia. The Region covers approximately 3,439 square miles of land and is home to about 272,500 persons. The Region is comprised of five counties (Augusta, Bath, Highland, Rockbridge and Rockingham) and five independent cities (Buena Vista, Lexington, Harrisonburg, Staunton, and Waynesboro). The Region also has 11 incorporated towns within its borders (Bridgewater, Broadway, Craigsville, Dayton, Elkton, Goshen, Glasgow, Grottoes, Monterey, Mt. Crawford, and Timberville).

The Central Shenandoah Valley Region is bounded on the west by the Allegheny Mountains and on the east by the crest of the Blue Ridge Mountains. Of the Region's 2.2 million acres of land, approximately 1.2 million acres are publicly held and protected. The headwaters of the James, Shenandoah, and Maury rivers are located in the Region. Bisected by Interstates 81 and 64, the Region is approximately 45 miles north of Roanoke, 100 miles west of Richmond, 125 miles southwest of Washington D.C., 68 miles south of the Virginia Inland Port, and 200 miles northwest of the Port of Hampton Roads. The Region enjoys mild winters and warm summers with an average annual temperature of 53 degrees Fahrenheit and an average annual precipitation of 37 inches.

DEMOGRAPHICS AT A GLANCE

Population

1990 Census - 225,025
 2000 Census - 258,789
 2006 Provisional Estimate - 272,529

Sub-regional Population (2006 Provisional Estimates)

Harrisonburg/Rockingham MSA - 117,396
 Staunton/Waynesboro/Augusta MPSA - 112,690
 Lexington/Buena Vista/ Rockbridge - 35,253
 Bath/Highland - 7,217

Average Household Size

1990..... 2.72 Persons
 2000.....2.65 Persons

Income

Central Shenandoah Valley Region
 Per Capita (2004): \$26,730

Central Shenandoah Valley Region
 Median Adjusted Gross Incomes
 For Married Couples (2004): \$47,191

Sources: Weldon Cooper Center for Public Service and the U.S. Census Bureau.

INFRASTRUCTURE AT A GLANCE

Government

Counties - Board of Supervisors
 Cities - City Councils
 Incorporated Towns - Town Councils

Real Estate Tax

(per \$100 assessed value)
 Harrisonburg \$0.59, Rockingham \$0.58
 Staunton \$0.90, Waynesboro \$0.70, Augusta \$0.58
 Lexington \$0.60, Buena Vista \$0.89,
 Rockbridge \$0.55
 Bath \$0.45, Highland \$0.38 (Monterey - \$0.13)

Bank Deposits 2006

Total \$3.690 Billion

Communications

Fiber optics, ISDN, and DSL capability

Transportation

Road - Interstates 81 and 64
 Rail - CSX, Norfolk Southern, Shenandoah Valley Railroad, Chesapeake Western, and Amtrak
 Air - Shenandoah Valley Regional Airport
 Port - Hampton Roads (200 miles east)

Sources: Local Governments and the Federal Deposit Insurance Corporation.

Compiled and published by the Central Shenandoah Planning District Commission, 112 MacTanly Place, Staunton, VA 24401 (540) 885-5174. FAX (540) 885-2687. Website: www.cspdc.org. E-mail: cspdc@cspdc.org. The publication of this report was financed in part, through a planning assistance grant from the Economic Development Administration, United States Department of Commerce, EDA Project Number 01-83-08435.

Permission to copy this profile is granted. CSPDC assumes no liability for accuracy of, use of, or inability to use the publication, information or data.

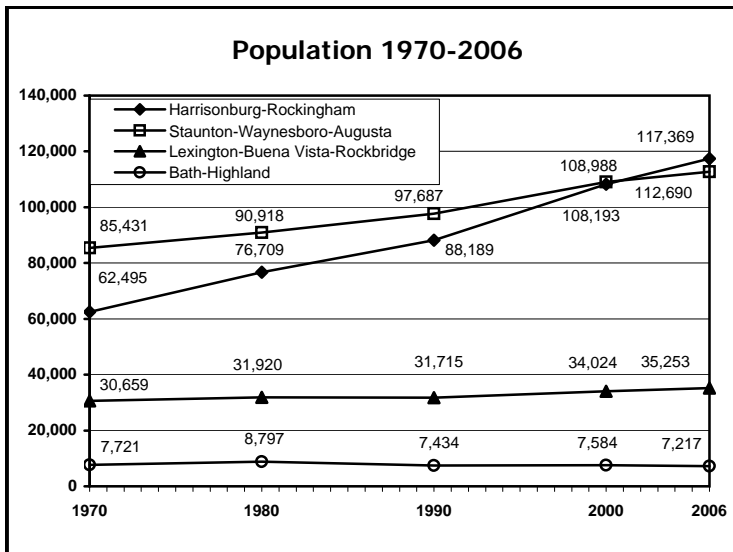
SALE OF THIS DOCUMENT IS PROHIBITED

POPULATION CHARACTERISTICS

Population			Number	Percent
	1990	2000	Change	Change
Total Population	225,025	258,789	33,764	15.0%
Male	110,351	126,831	16,480	14.9%
Female	114,674	131,958	17,284	15.1%
Age				
	1990	2000		
Under 5 years	16,719	14,425	-2,294	-13.7%
5 to 17 years	32,859	41,827	8,968	27.3%
18 to 64 years	145,354	166,389	21,035	14.5%
65 to 74 years	17,851	19,302	1,451	8.1%
75 to 84 years	9,648	12,566	2,918	30.2%
85 years and over	2,594	4,280	1,686	65.0%
Median Age	35.1	35.9	0.8	2.3%
Under 18 years	49,578	56,252	6,674	13.5%
Percent of total	22.0%	21.7%		
65 years and over	30,093	36,148	6,055	20.1%
Percent of total	13.4%	14.0%		
Households by Type				
	1990	2000		
Total Households	82,595	97,763	15,168	18.4%
Family Households	59,241	66,561	7,320	12.4%
Non-family Households	23,354	31,202	7,848	33.6%
Percent of total	28.3	31.9		
Average Household Size	2.72	2.65	-0.07	-2.6%

Civilian Labor Force			Number	Percent
	1995	2005	Change	Change
Civilian Labor Force	126,183	140,854	14,671	11.6%
Employment	120,668	136,520	15,852	13.1%
Unemployment Number	5,515	4,334	-1,181	-21.4%
Unemployment Rate	4.4%	3.1%	-1.3%	-29.5%

Source: 1990 and 2000 U.S. Census of Population and Housing and Virginia Employment Commission



Source: U.S. Census, Weldon Cooper CPS

CSPDC 2007

HOUSING CHARACTERISTICS

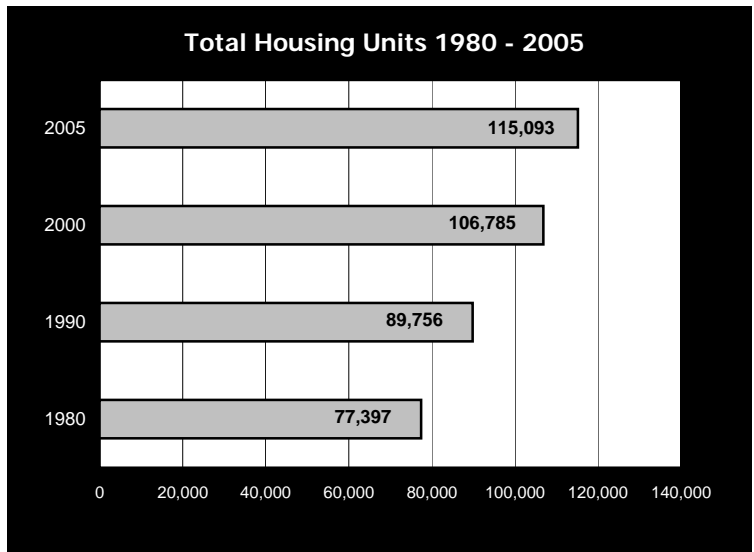
Housing			Number	Percent
	2000	2005	Change	Change
Total Housing Units	106,785	115,093	8,308	7.8%
Occupancy and Tenure				
	1990	2000		
Occupied units	82,595	97,763	15,168	18.4%
Owner Occupied	57,630	68,785	11,155	19.4%
Percent	69.8	70.4	--	0.60%
Renter Occupied	24,965	28,978	4,013	16.1%
Vacant Units	7,161	8,642	1,481	20.7%
Homeowner vacancy rate	1.40	1.67	--	0.27%
Rental vacancy rate	4.40	5.53	--	1.13%
Average household size (owner-occupied units)	2.61	2.53	-0.08	-3.1%
Average household size (renter-occupied units)	2.37	2.36	-0.01	-0.4%
Units in Structure				
	1990	2000		
1-Unit, detached	63,944	76,337	12,393	19.4%
1-Unit, attached	2,010	3,368	1,358	67.6%
2 to 4 Units	6,617	6,876	259	3.9%
5 or more	7,576	10,172	2,596	34.3%
Manufactured home, trailer, and other	9,609	9,652	43	0.4%
Value				
	1990	2000		
Specified owner-occupied units				
Median (dollars)	68,446	103,806	35,360	51.7%
Contract Rent				
	1990	2000		
Specified renter-occupied units				
Median (dollars)	291	473	182	62.5%

Source: U.S. Bureau of Census - Census of Housing 1990 and 2000, 2005 Housing Units Estimate

New Single-Family Housing Units Authorized

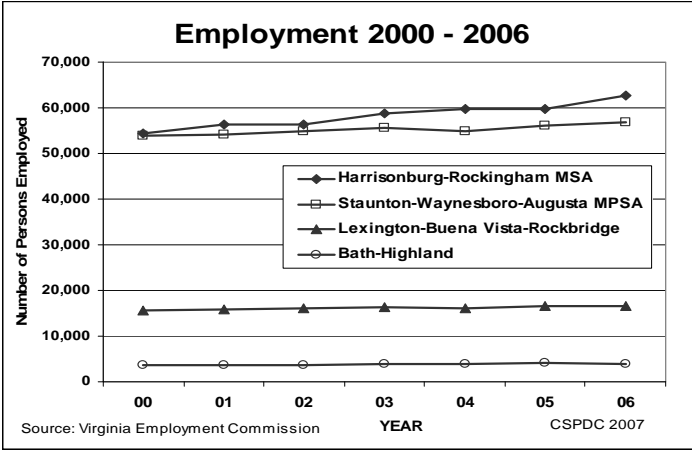
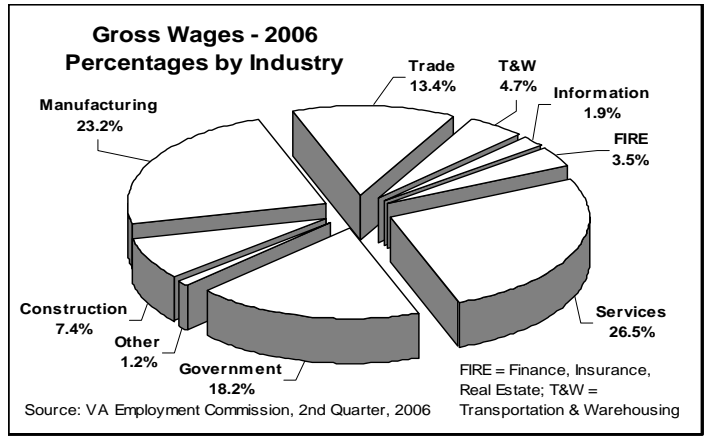
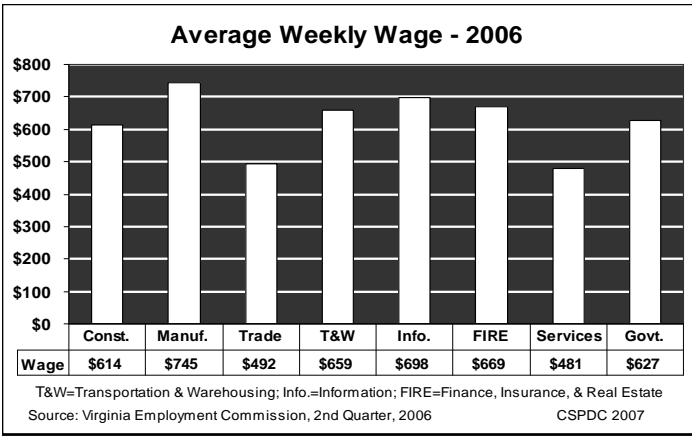
2000.....	1,453	2004.....	2,432
2001.....	1,546	2005.....	2,157
2002.....	1,815		
2003.....	1,694	2000 - 2005 Total.....	10,329

Source: Weldon Cooper Center for Public Service



Source: U.S. Census, Weldon Cooper CPS

CSPDC 2007



Tourism - 2005

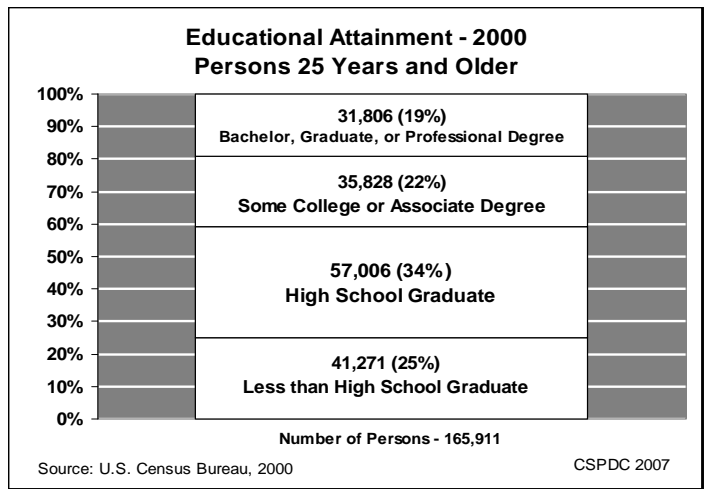
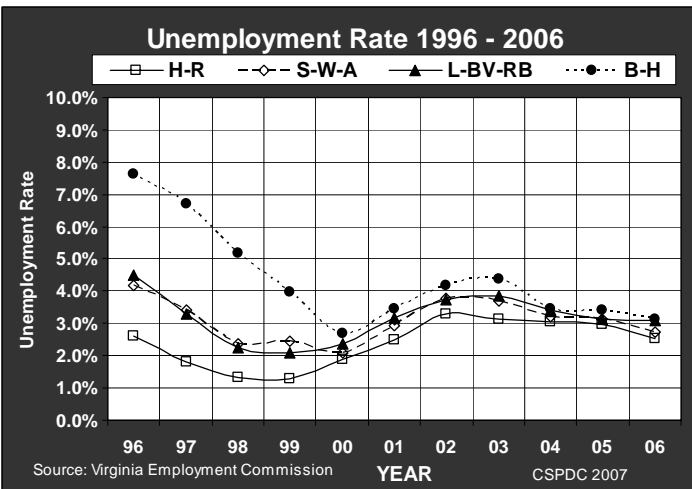
Total Travel Expenditures	\$664,636,375
Travel Related Payroll	\$118,917,965
Travel Generated Employment	7,351
Local Tax Receipts	\$17,682,349

Source: Virginia Department of Tourism CSPDC 2007

Agriculture - 1992 to 2002

	1992	1997	2002
Number of Farms	4,438	4,376	4,940
Acreage Farmed	809,202	802,284	860,305
Average Size (Acres)	182	183	174
Market Value of Products Sold (\$000)	\$508,099	\$606,489	\$624,381

Source: U.S. Census of Agriculture 1992, 1997, and 2002. CSPDC 2007
NOTE: 2002 Ag. Census used a new methodology to count farms & acres farmed.



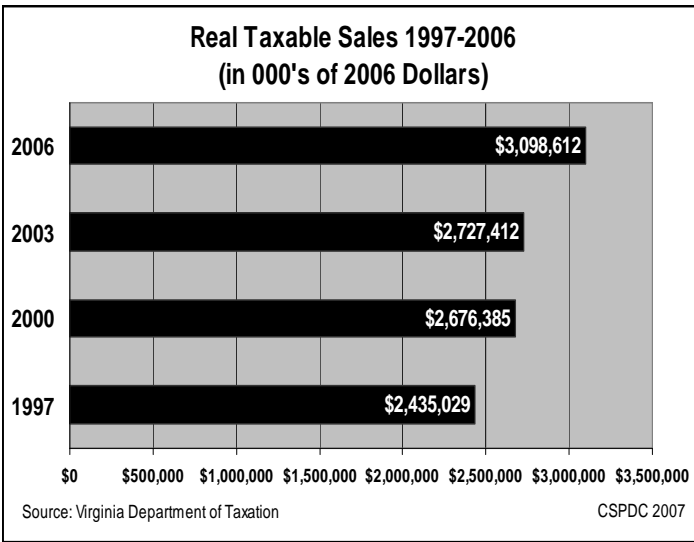
Employment by Industrial Sector - 2006

	R-H	S-W-A	L-BV-RB	B-H	Region	% of Area	% of VA
Agricultural, Forestry	467	234	93	82	878	0.7%	0.3%
Mining & Quarrying	76	48	*	*	240	0.2%	0.3%
Utilities	*	130	*	121	343	0.3%	0.3%
Construction	4,574	3,451	610	226	8,861	7.0%	6.9%
Manufacturing	11,285	8,739	2,723	101	22,848	18.2%	7.9%
Wholesale & Retail Trade	10,639	7,224	1,886	153	19,901	15.8%	14.7%
Transportation & Warehousing	2,300	2,789	139	10	5,261	4.2%	2.8%
Information	1,340	483	110	45	2,013	1.6%	2.5%
Finance, Insurance & Real Estate	1,985	1,392	335	104	3,816	3.0%	5.3%
Services	17,972	14,955	5,769	1,644	40,341	32.1%	40.4%
Government	9,067	8,918	2,715	563	21,263	16.9%	18.3%
TOTAL	59,768	48,402	14,527	3,072	125,769	100.0%	100.0%

Source: Virginia Employment Commission, 2nd Quarter, 2006 CSPDC 2007
* Data is withheld, but included in total. Columns may not total due to rounding & withheld data.

Number of Business Establishments: All Industries					
	2002	2003	2004	2005	2006
Harrisonburg-Rockingham MSA	2,711	2,745	2,820	2,948	3,070
Staunton-Waynesboro-Augusta MPSA	2,671	2,708	2,719	2,787	2,879
Lexington-Buena Vista-Rockbridge	929	939	921	941	965
Bath-Highland	274	266	265	272	264
Central Shenandoah Valley Region	6,585	6,658	6,725	6,948	7,178

Source: Virginia Employment Commission
Covered Employment and Wages, 2nd Quarter 2006
CSPDC 2007



Public Schools 2005-06	
2005-06 Year-End Enrollment	37,579
Total Expenditures Per Pupil	\$8,874
Local Share	\$3,645
Ratio of Pupils per Classroom Teacher	
Elementary (K-7)	11.7
Secondary (8-12)	10.8
Total Graduates	2,579
Percent Continuing Education	65.8%

Source: Virginia Department of Education
CSPDC 2007

Community

Recreation: Blue Ridge Parkway, Washington-Jefferson National Forest, Skyline Drive, Shenandoah National Park, Appalachian Trail, Natural Bridge, Goshen Pass, Douthat Lake State Park, Natural Chimneys & Grand Cavern Regional Parks, The Homestead, Massanutten, & Wintergreen Resorts, the James, Shenandoah, & Maury rivers.

Attractions: Virginia Horse Center, Museum of American Frontier Culture, Woodrow Wilson Presidential Library, Artisans Center of Virginia, Stonewall Jackson House, Lee Chapel, American Shakespeare Center, Hardesty-Higgins House, P. Buckley Moss Museum, RR Smith Center, Theater at Lime Kiln, Garth Newel Music Center, and Civil War Battlefield sites.

Events: Highland Maple Festival, Daylily & Wine Festival, America's Birthday Celebration, Bike Shenandoah, Virginia Fall Foliage Festival Art Show, Virginia Blues & Jazz Festival, Virginia Mennonite Relief Sale, Nothern' Fancy Bluegrass Festival, Fortune-Williams Music Festival, Virginia Fly Fishing Festival, and the Rockbridge Wine Festival are just a few of the region's many events.

Colleges: Regional schools include James Madison University, Washington and Lee University, Virginia Military Institute, Southern Virginia University, Bridgewater College, Mary Baldwin College, Eastern Mennonite University, Dabney S. Lancaster Community College and Blue Ridge Community College. Virginia Tech and the University of Virginia are nearby.

Media: Thirteen local papers circulate in the region, along with regional and national papers. Public radio and television is also available in the region.

Civic and Religious: More than 250 churches representing most denominations are active in the region. Many civic groups dedicated to public service provide community service.

Healthcare: Augusta Medical Center, Rockingham Memorial Hospital, Bath County Community Hospital and Stonewall Jackson Hospital in Lexington all provide excellent healthcare.

For More Information.....

Central Shenandoah Planning District Commission
112 MacTanly Place
Staunton, VA 24401
(540) 885-5174
(540) 885-2687 FAX
cspdc@cspdc.org
www.cspdc.org

Shenandoah Valley Partnership
P.O. Box 2241
Harrisonburg, VA 22801
(540) 568-3100
(540) 568-3170 FAX
svp@jmu.edu
www.svp-va.org

Central Shenandoah Valley's Regional Data Center
An extensive database of demographic and economic data on the Central Shenandoah Valley Region can be accessed by following the links on either of the above organizations' websites.